

# OFFICE



# WHO IS SMART SODA?

**SMART SODA** IS THE **ELITE, HEALTHY BEVERAGE ALTERNATIVE** DISRUPTING THE CONVENTIONAL, UNINTERRUPTED **US \$267B** (DOMESTIC) AND **US \$994B** (GLOBAL) **SOFT DRINKS MARKET**.

**SMART SODA** IS **CHOSEN BY FORTUNE 500 COMPANIES** AS WELL AS LARGE **CONVENIENCE STORES, OFFICES AND RESTAURANTS** ACROSS THE COUNTRY.





# WHY SMART SODA?

**SMART SODA** FOCUSES ON OFFERING COMMERCIAL AND INDIVIDUAL CUSTOMERS ACCESS TO **UNLIMITED ALKALINE WATER, VITAMIN-INFUSED FLAVORED SPARKLING ALKALINE WATERS AND SODAS**, MADE WITH **ONLY ORGANIC CANE SUGAR (OR ZERO SUGAR)** THAT ARE **100% NATURALLY FLAVORED, VEGAN, KOSHER, NON-GMO, ANTIOXIDANT-RICH AND GLUTEN-FREE.**

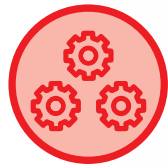
**SMART SODA** ALSO OFFERS **FUNCTIONAL SHOTS, A UNIQUE ON DEMAND FUNCTIONAL BEVERAGE SYSTEM**, WHICH INCLUDES **ENERGY, IMMUNITY AND RELAXATION** BOOSTS!



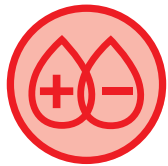
# BENEFITS OF SMART SODA



**\*VITAMIN  
INFUSED**  
B3, B6, B12, C



**\*FUNCTIONAL  
SHOTS**  
ENERGY, IMMUNITY,  
RELAXATION



**\*MADE WITH  
UNLIMITED  
ALKALINE WATER**



**\*CUSTOMIZED  
BOTTLES WITH  
YOUR LOGO**



**SUGAR FREE**  
(DIET SODAS &  
FLAVORED WATERS)



**ORGANIC  
CANE SUGAR**  
(SODAS)



**32 FLAVORS**



**GREAT TASTE**

\*Exclusive to Smart Soda



# SMART SODA CARE

## ONE OF THE WORLD'S FIRST ON DEMAND FUNCTIONAL BEVERAGE SYSTEMS

THE ONLY SYSTEM THAT SYNCHRONIZES BETWEEN THE USER'S FUNCTIONAL NEED AND THE TYPE OF BEVERAGE INSTANTLY DISPENSED.

**LOW ENERGY? CATCHING A COLD? STRESSFUL DAY?**

OUR MULTIFACETED SYSTEM PROVIDES THE GREATEST TASTIG VITAMIN-INFUSED AND ALKALINE WATER BEVERAGES, AND GIVES YOU THE ABILITY TO ENHANCE YOUR DRINK WITH "FUNCTIONALITY".

SIMPLY SELECT YOUR SMART SODA FAVORITE FLAVOR, ADD A SHOT OF ENERGY, IMMUNITY BOOST, RELAXATION (OR MORE) AND ENJOY.

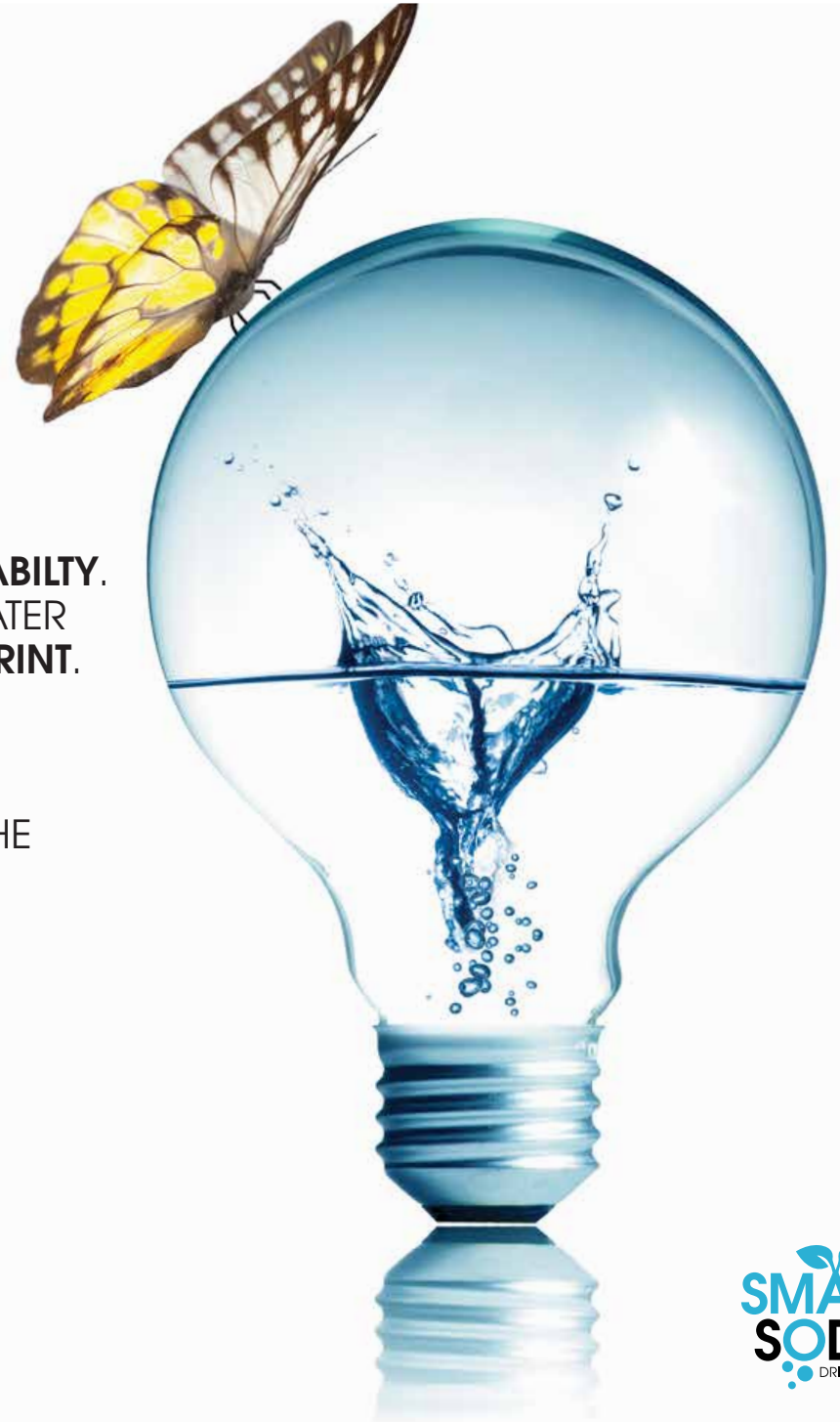


# SUSTAINABILITY

TODAY **CORPORATE RESPONSIBILITY = SUSTAINABILITY.**  
DRINK **DELICIOUS** AND **HEALTHY** SPARKLING WATER  
WHILE **MINIMIZING YOUR ECOLOGICAL FOOTPRINT.**

**HELP THE EARTH BY NOT USING PLASTIC**  
**WATER BOTTLES. WE PROVIDE SUSTAINABLE AND**  
**REUSABLE GLASS BOTTLES, CUSTOMIZED WITH THE**  
**CLIENT'S LOGO.**

ADDITIONALLY, OUR FLAVORS ARE DELIVERED IN  
**RECYCLABLE CARDBOARD BOXES.**



# SUSTAINABILITY

- EACH EMPLOYEE GETS A REUSABLE BOTTLE / TUMBLER
- PRODUCING UNLIMITED SPARKLING MINERAL WATER & ALKALINE MINERAL WATER =  
LESS: PLASTIC / GLASS / PACKAGING / TRANSPORTING

**1 SYRUP PACKAGE “BIB” CREATES:  
3,840oz OF FLAVORED WATER /  
SODA / TEA / LEMONADE.**

**=**

**EQUIVALENT TO  
320 12oz CANS OR  
240 16oz PLASTIC BOTTLES**



**VS**





# WHY ALKALINE WATER

SMART SODA OFFERINGS INCLUDE **UNLIMITED ALKALINE WATER USED UNIVERSALLY AS THE BASE FOR ALL OUR BEVERAGES**, MAKING OUR DRINKS **LESS ACIDIC AND GREAT TASTING**.

## HEALTH BENEFITS OF ALKALINE WATER



**IMPROVES MEMORY AND COGNITION**



**PROMOTES CARDIOVASCULAR HEALTH**



**BOOSTS IMMUNE SYSTEM**



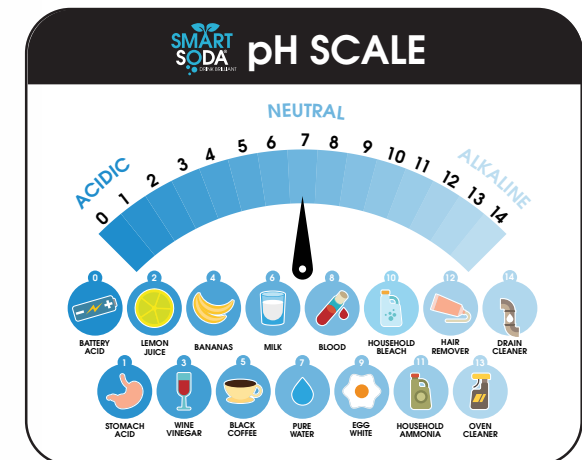
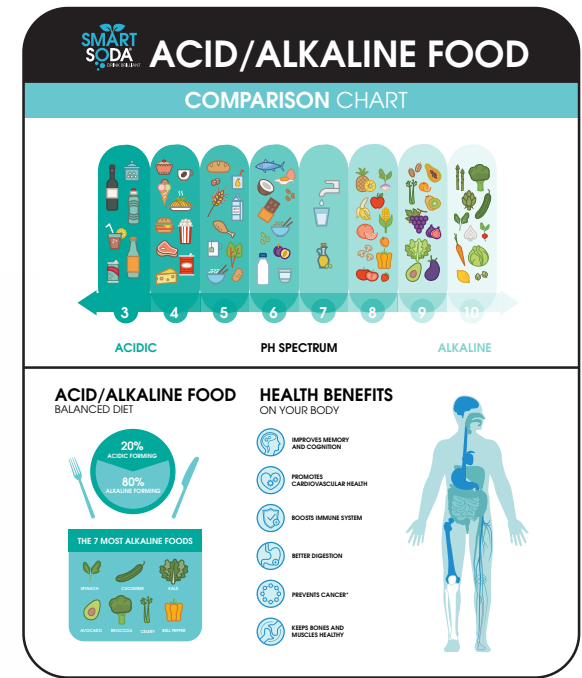
**BETTER DIGESTION**



**PREVENTS CANCER\***



**KEEPS BONES AND MUSCLES HEALTHY**



\*Studies have shown



**DELICIOUS FLAVORS  
OF VITAMIN INFUSED  
SODA, MADE WITH  
ALKALINE  
MINERALIZED  
WATER**

# SMART SODA FLAVOR PORTFOLIO

## SODA MADE WITH ORGANIC CANE SUGAR (BIB)—NUTRITION & FLAVORS

SERVING SIZE	CALORIES	TOTAL FAT 0g	SODIUM 0mg	TOTAL CARB	TOTAL SUGARS	PROTEIN	VITAMIN C	NIACIN	VITAMIN B6	VITAMIN B12	PANTOTHENIC ACID	SWEETENERS
8 fl oz (240ml)	100	0%	0%	25g 9%	25g 50%	0%	23g 25%	1.6mg 10%	0.2mg 10%	0.25mcg	0.5mg 10%	ORGANIC CANE SUGAR

NOT A SIGNIFICANT SOURCE OF SATURATED FAT, TRANS FAT, CHOLESTEROL, DIETARY FIBER, VITAMIN D, CALCIUM, IRON AND POTASSIUM. INFORMATION DOES NOT REFLECT NUTRIENTS FROM WATER



ALL PRODUCTS COME IN BIBS  
(BAG IN BOX SYRUP)

\*See additional information below.

## SUGAR-FREE DIET SODA (BIB)—NUTRITION & FLAVORS

SERVING SIZE	CALORIES	TOTAL FAT 0g	SODIUM 0mg	TOTAL CARB	TOTAL SUGARS	PROTEIN	VITAMIN C	NIACIN	VITAMIN B6	VITAMIN B12	PANTOTHENIC ACID	SWEETENERS
8 fl oz (240ml)	0	0%	0%	0g 0%	0g 0%	0%	23g 25%	1.6mg 10%	0.2mg 10%	0.25mcg	0.5mg 10%	SUCRALOSE OR STEVIA

NOT A SIGNIFICANT SOURCE OF SATURATED FAT, TRANS FAT, CHOLESTEROL, DIETARY FIBER, VITAMIN D, CALCIUM, IRON AND POTASSIUM. INFORMATION DOES NOT REFLECT NUTRIENTS FROM WATER



## ALKALINE & SPARKLING MINERALIZED WATER



## UNSWEETENED FLAVORED WATER (BIB) — NUTRITION & FLAVORS

SERVING SIZE	CALORIES	TOTAL FAT 0g	SODIUM 0mg	TOTAL CARB	TOTAL SUGARS	PROTEIN	VITAMIN C	NIACIN	VITAMIN B6	VITAMIN B12	PANTOTHENIC ACID	SWEETENERS
8 fl oz (240ml)	0	0%	0%	0g 0%	0g 0%	0%	23g 25%	1.6mg 10%	0.2mg 10%	0.25mcg	0.5mg 10%	NONE

NOT A SIGNIFICANT SOURCE OF SATURATED FAT, TRANS FAT, CHOLESTEROL, DIETARY FIBER, VITAMIN D, CALCIUM, IRON AND POTASSIUM. INFORMATION DOES NOT REFLECT NUTRIENTS FROM WATER



\* IN THE CHARTS INDICATES THE RECOMMENDED DAILY VALUE

\*5-Gallon BIBS Produces 3,840 Finished Oz of Beverage (480 8oz Drinks) (5-1 Water To Syrup Ratio)

\*2.5-Gallon BIBS Produces 1,920 Finished Oz of Beverage (240 8oz Drinks) (5-1 Water To Syrup Ratio).

\*1-Gallon BIBS Produces 960 Finished Oz of Beverage (120 8oz Drinks) (5-1 Water To Syrup Ratio). Flavored water only.





# JuLi-TOUCH SPECIFICATIONS



## JuLi-TOUCH

The award-winning TST offers customers a **personalized** and **unique dispensing experience**. With just the touch of a button your customers can choose from a **variety of beverage choices** including **trending specialty beverages** such as **energy** and **health benefit drinks**.

The main screen can play video when not in-use

26.75"

Controls are for ADA compliance

9.4"

The lights on the side of the unit are color changing RGB LEDs. Set one color or rotate several.

18.7"

## FEATURES

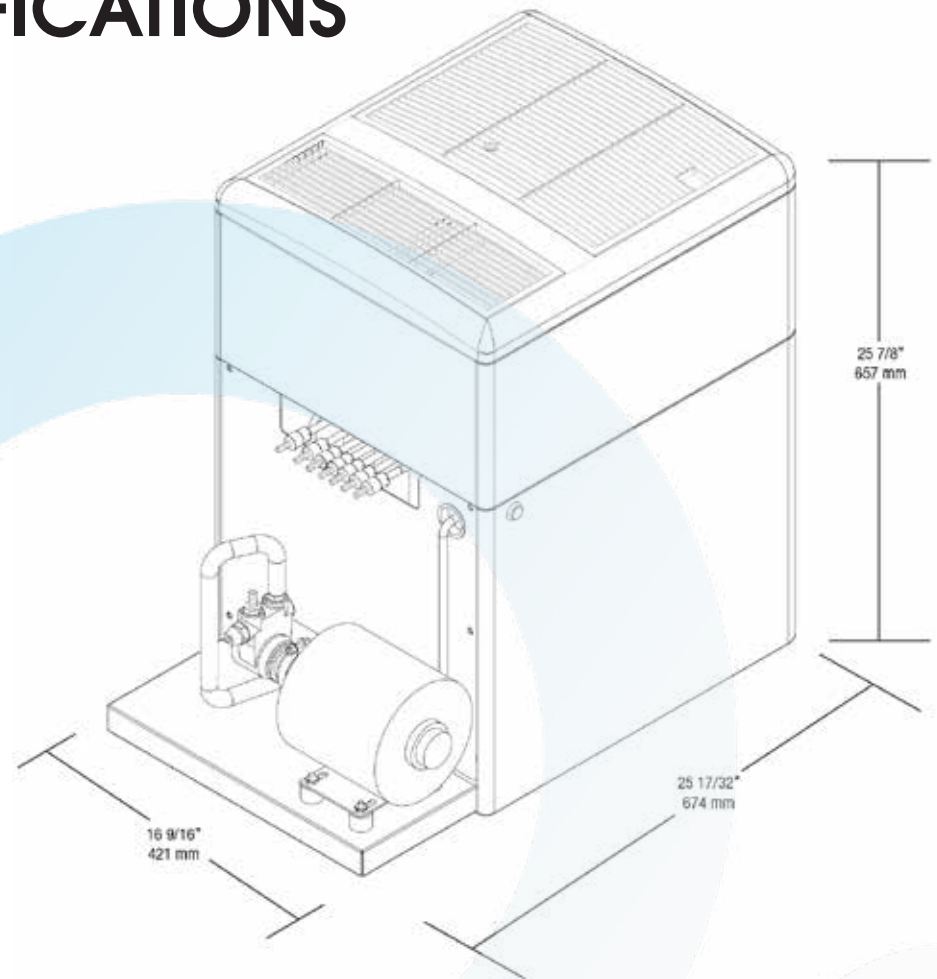
- SMART SODA CONNECT
- CARBONATED OR NON-CARBONATED
- DISPENSE UP TO 10 PRODUCTS
- LARGE 10.4" INTERACTIVE TOUCHSCREEN
- SMALL ENVIRONMENTAL FOOTPRINT
- AETHER TEA CARTRIDGE INCLUDED

# REMOTE CHILLER SPECIFICATIONS



## REMOTE CHILLER DELTA 9100

Included with all JuLi-TOUCH & JuLi BAR GUN












## FEATURES

- A **compact unit** utilizing **cold carbonation** and a **stainless steel recirculating pump** to **chill both the water and syrups**, and to provide **optimal temperature product** to a remote tower / bar gun location.



# JuLi-TOUCH PROGRAM

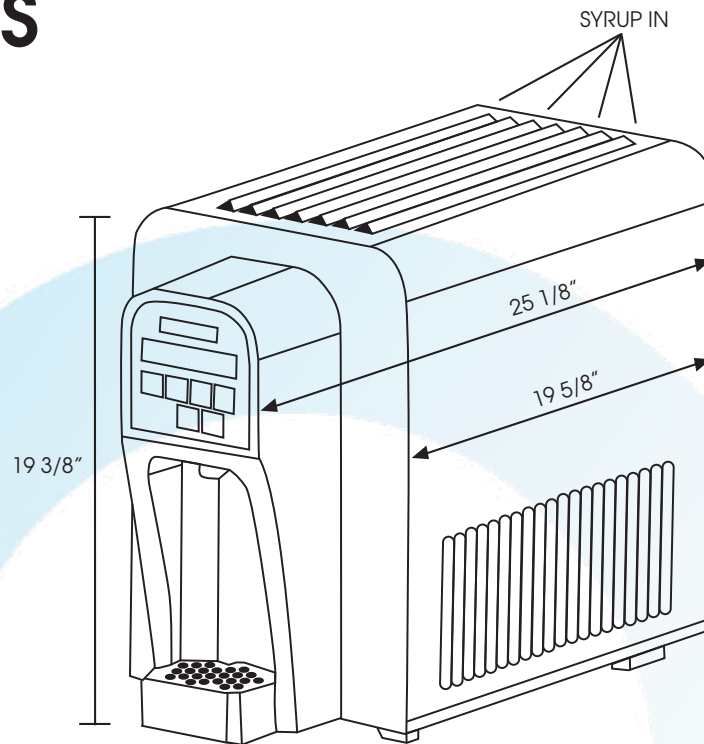
	The JuLi-TOUCH machine + a remote chiller	\$350 PER MONTH
	Unlimited filtration, includes our <b>alkaline</b> and Nano-Positronic® systems	INCLUDED
	<ul style="list-style-type: none"> <li>• 2 wide x 5 high welded incline rack</li> <li>• 10 Flojet syrup pumps</li> <li>• Primary and secondary regulators</li> <li>• Insulated 10 line tubing</li> </ul>	INCLUDED
	The world's first vitamin infused soda and flavored sparkling water	FIRST 5,000 DRINKS ARE INCLUDED
	50 stainless steel, reusable, dishwasher-safe tumblers, with laser engraved company logo	INCLUDED
	5 years all-inclusive service program including <b>free filter exchange</b> provided by Smart Soda, the <b>premiere provider</b> of beverage equipment and service.	INCLUDED
	No deposit required. Free installation, filter and flavor delivery	INCLUDED
	90 days deferred payment (based on credit approval)	INCLUDED
	Lease to own — You will own your system after 60 months	INCLUDED

# LILLY SPECIFICATIONS



## LILLY OFFICE

The Lilly's compact set up is ideal for small businesses. It is capable of dispensing 4 products plus water.



### ELECTRICAL

110 -115 V x 60 hz US.  
220-240 V x 50 hz X 1 PH

### POWER OUTPUT

10.00 amps

### ICE BANK PULL DOWN

1 hr 45 mins (nominal)

### ICE BANK WEIGHT

5.94 lbs /2.7 KG (nominal)

### WEIGHT

Lilly Office – 68.3 lbs/ 31 KG

### DRINK CAPACITY

90 drinks @ 1dpm

### DISPENSE CAPACITY

1.5 oz. per second

### OPTIONAL ACCESSORIES

LCD Merchandiser Kit  
Available  
DOWNLOAD PROGRAM  
OVERVIEW











## FEATURES

- **'PLUG & PLAY' INSTALLATION**  
REQUIRES MAINS POWER, CO2 AND  
WATER CONNECTION
- **BEVERAGE GRADE CO2 SUPPLY**  
80PSI REGULATORS
- **BiB (BAG IN BOX) MUST BE STORED BELOW,**  
OR ON A LEVEL WITH THE DISPENSE UNIT  
WITHIN 2 METERS
- **LEAN POST MIX DISPENSER**
- **WATER SUPPLY IS PIPED INTO THE UNIT**  
FROM THE MAINS 40PSI





# LILLY PROGRAM

	<b>The LILLY PROGRAM</b> with or without <b>cabinet</b>	<b>\$199 / \$239</b> (with cabinet)
	<b>Unlimited filtration</b> , includes our <b>alkaline</b> and <b>Nano-Positronic®</b> systems.	<b>INCLUDED</b>
	<b>Stand alone cabinet</b>	<b>OPTIONAL</b>
	<b>The world's first vitamin infused soda and flavored sparkling water.</b> You choose the flavors.	<b>FIRST 1,900 DRINKS ARE INCLUDED</b> *4 BIBS (Bag In Box Syrups) included in program
	<b>50 stainless steel, reusable, dishwasher-safe tumblers, with laser engraved company logo</b>	<b>INCLUDED</b>
	<ul style="list-style-type: none"> <li>• <b>5 year all inclusive service &amp; maintenance program, (parts &amp; labor)</b></li> <li>• <b>5 year water filter replacement program</b></li> </ul>	<b>INCLUDED</b>
	<b>No deposit required</b>	<b>INCLUDED</b>
	<b>90 days deferred payment.</b> *Based on credit approval	<b>INCLUDED</b>
	<b>100% Lease to own financing available - 60 months</b>	<b>INCLUDED</b>
	<b>Shipping &amp; Delivery</b>	<b>INCLUDED</b>

# SMART SODA CONNECT DASHBOARD

- **DASHBOARD**  
Manage Users, Dispensers

- **CUSTOMER DISPLAYS**  
Filter Data to Focus on What's Most Important for Your Business

- **FILTERS**  
Filter What you see by Day, Week or Month

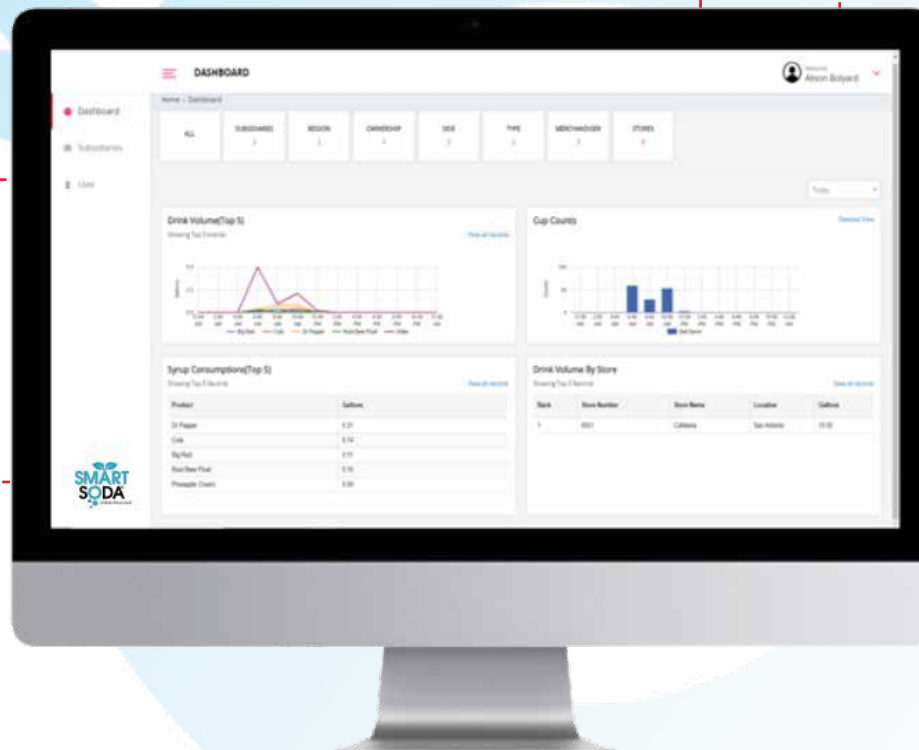
- **DRINK VOLUME**  
Brand by Brand Performance Breakdown

- **TRACKING**  
See in Real-Time Dispensed Beverages

- **SYRUP CONSUMPTION**  
Monitor Brands That Have Highest Performance

- **REPORTING**  
Export Data Into Easy to Read Reports

- **STORES**  
View Best Performing Locations



\* Available for **JuLi-TOUCH** or **JuLi-TWIN**



# OUR REVOLUTIONARY FILTRATION TECHNOLOGY

## FILTRATION PROCESS

- Physical Filtration
- Chemical Absorption
- Electro Positive Attraction

## ELECTRO POSITIVE ATTRACTION

Filtering Negative Ionized Micro Virus and Harmful Substances Through a Positive Ionized Filter System

### RO SYSTEM

- Low Flow
- High Grade Purification
- Wastes Water
- Requires Drain
- Power Required
- Removes Minerals

### HYBRID SYSTEM

- High Flow
- High Grade Purification
- No Wasted Water
- Mineral Preservation

### UF SYSTEM

- Medium Flow
- Mid Grade Purification
- No Wasted Water
- Requires Drain
- Mineral Preservation



## SMART SODA'S ALKALINE FILTER

Alkaline antioxidant water balances your body's internal pH, neutralizes free radicals within the cells and increases cellular hydration resulting in increased energy, improved health and a stronger immune system.

## 1 FILTER, 4 STAGES



PRE  
FILTER

### SEDIMENT

Sediment filter reduces sand, silt, sediment, and pipe turbidity.

HYBRID  
MEMBRANE

### HYBRID NP MEMBRANE

Hybrid Nano-Positronic® Membrane with electro positive attraction removes cysts, bacteria, and viruses.

ACTIVATED  
CARBON

### CARBON BLOCK

Carbon Block Filter removes chlorine, chloramines, taste, odor, organic compounds, and heavy metals.

SCALE  
MEDIA

### SCALE INHIBITOR

Scale Inhibitor protects equipment from scale formation.

CYST  
99.95%

VIRUS  
99.9%

BACTERIA  
99.99%

HEAVY  
METAL

## SPECIFICATIONS

Working Pressure:

Min. 68 kPa (10 psi)

Max. 861 kPa (125 psi)

Operating Temperature:

Min. 4° (39 °)

Max. 38° (100 °)

Maximum Flow Rate:

3.34 GPM

Available Capacity:

32,000 Gallon

- Hi Flow, No Tank, No Pump Required
- Parallel Connection
- Quick Exchange System
- Sanitary
- Convenience Quick Change
- World's Most Advanced Nano Positronic® Filter Technology



# COMPARISON CHART



	JuLi TOUCH	LILLY	BEVI
ALKALINE WATER	UNLIMITED	UNLIMITED	NO
SPARKLING MINERAL WATER	UNLIMITED	UNLIMITED	NO
VITAMIN INFUSED FLAVORS	YES	YES	NO
#OF FLAVORS	10	4	4
ON-DEMAND FUNCTIONAL SHOTS	AVAILABLE	NA	NA
BASIC MONTHLY COST	\$350	\$199	\$300
DISPENSABLE PRODUCT AVAILABLE			
FLAVORED WATER	\$90 PER BIB (Vitamin Infused)	\$90 PER BIB (Vitamin Infused)	\$90 PER BIB (NO Vitamins)
ORGANIC CANE SUGAR SODA (Vitamin Infused)	AVAILABLE	AVAILABLE	NA
DIET SODA (Vitamin Infused)	AVAILABLE	AVAILABLE	NA
ICED TEA (Vitamin Infused)	AVAILABLE	AVAILABLE	AVAILABLE
CO2 FIRST TANK	FREE	FREE	\$70
CO2 EXCHANGE COST	\$50 PER TANK	\$50 PER TANK	\$70 PER TANK
UPFRONT PAYMENT	\$0	\$0	\$810 - first payment, Installation, filters, CO2
*DEFERRED PAYMENT	90 DAYS	90 DAYS	NA
UPFRONT PAYMENT DRINKS (setup)	\$0 + 5,000 drinks free	\$0 + 1,900 drinks free	\$360-\$440 (1,600 drinks)
CUSTOMIZED BOTTLES WITH LOGO	YES	YES	NO
WATER FILTERS	INCLUDED	INCLUDED	\$70 - (every 5,000 gallons)
EQUITY	YES - equipment financing	YES - equipment financing	NO - rent with no equity
COMMITMENT & PRICE PROTECTION	5 YEARS (filter & maintenance)	5 YEARS (filter & maintenance)	2 Years
**ESTIMATED TOTAL COST (5 YEARS)	\$33,604	\$25,174	\$38,526
**ESTIMATED TOTAL COST (10 YEARS)	\$58,168	\$43,268	\$76,243

\*Credit terms and deferred payments are subject to credit approval.

\*\*Calculation is based on 100 employee office having (1) 12oz flavored carbonated beverage, (1) 12oz non-flavored carbonated water beverage & (2) 12oz still water beverage per day 5 days a week. Also included in the calculation is an extended equipment & water filter service agreement with Smart Soda for years 5-10.

Please note, that all comparisons mentioned have been compiled based on product information available on August 2021 from product brochures/website, and actual testing under similar conditions. Your own due diligence is advised. The terms and conditions may change. The information provided is an opinion of Smart Soda, a direct competitor of Bevi. Bevi is a trade mark of Bevi.





# THANK YOU

**Smart Soda Holdings, Inc**  
25700 Science Park Drive  
Landmark Center Suite 370  
Beachwood, OH 44122

Tel. +1.888.998.9668  
[www.smartsoda.com](http://www.smartsoda.com)

